

Marlboro progress

THE FIFTH Marlboro Grandmaster chess classic and first Asian Grandmaster Tournament is now under way at the Makati Hotel, Manila, Philippines. The tournament is category 6 which means an IM norm is 8 points out of 13 and a GM 9½. This was in jeopardy for some time, however, because at the last minute the favourite, and at 2590 the highest Elo-rated player, Erfim Geller of the Soviet Union, cabled to say travel problems had

arisen and he would not be able to arrive in time. However FIDE deputy president Florencio Campomanes, coordinator of the tournament, moved heaven and earth to rush in replacement James Tarjan of the USA whose Elo rating is 2495. His presence just managed to save the category 6 status.

The participants in order of Elo rating are:

- EUGENE TORRE, IGM, Philippines, Elo 2590
- JAMES TARJAN, IGM, USA Elo 2495

- ROSENDO BALINAS JR, IGM, Philippines, Elo 2420
- MURRAY CHANDLER, IM, New Zealand, Elo 2385
- TERRY SHAW, Nat Master, Australia, Elo 2385
- KHOSSROW HARANDI, IM, Iran, Elo 2375
- MEHRSHAD SHARIF, IM, Iran, Elo 2360
- RENATO NARANJA, IM, Philippines, Elo 2345
- RICO MASCARIAS, Nat Master, Philippines, Elo 2345
- BACHAR KOUATLY, IM, Lebanon, Elo 2340
- AROVAH BACHTIAR, Nat Master, Indonesia, Elo 2335
- ARDIJANSA, IM, Indonesia, Elo 2330
- RODOLFO TAN CARDOSO, IM, Philippines, Elo 2320
- JACOBUS SAMPOUW, Nat Master, Indonesia, Elo 2315

As I write (after four rounds) the favourite Torre is leading and he appears to be heading for a win. He is being followed by Harandi and Bachtiar, who looks



Eugene Torre



Terry Shaw

certain to obtain the second norm he needs for the IM title, having just defeated Tarjan in a complicated struggle. I am doing very poorly with just ½ out of 4,

my losses being to Torre, Bachtiar and Sampouw, but there are still nine rounds to go and a lot of hard games to be fought.

In round three, Shaw

appeared to have the edge against Torre after he subtly transposed move order in the open to wrest the initiative.

Makati Hotel, Manila 77
SICILIAN

Shaw	Torre
1. e4	c5
2. g3	d5
3. eXd5	QXd5
4. Nf3	Bg4
5. Bg2	Qe6 ch
6. Kf1	Bh3
7. d3	

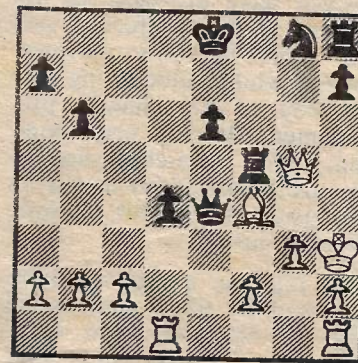
So far all theory but 7.d3 is a transposition of move order — formally 7.Nc3 Nc6 8.d3 Qd7! (But not 8... Nf6?! 9.Be3 b6 10.Ng5! Bxg2 ch 11.Kxg2 Qd7 12.Qf3! with advantage) 9.Be3 Bxg2 ch 10.Kxg2 e6 with equality, has been played.

7. ...	Nc6?!
(7 ... Qd7!)	
8. Be3	Qf5
9. Nc3	b6
10. Qe2	Rd8
11. Nb5	Rd7
12. Bf4	e6
13. Rd1	Be7
14. d4	g5
15. d5!	Nd4

(15 ... eXd5 loses to 16.Nd6 ch)

16. NbXd4	cXd4
17. dXe6	fXe6
18. Nxg5	Bxg2 ch
19. Kxg2	Bxg5
20. Qh5 ch	Rf7
21. Qxg5	Qe4 ch
22. Kh3	Rf5

TORRE



SHAW

23. Qg7??

Right at the finish Shaw errs. Correct is 23.Rh1! offering an exchange of queens while remaining a pawn up. If Torre then tries 23... Qd5 Shaw has the thrust 24.c4!

23... Nf6!!

A powerful riposte which the Australian had overlooked. Faced with mate Shaw sacrifices his queen, but to no avail.

24. Qxh8 ch Kf7
25. Qxf6 ch

(or 25.g4 Rxg4 26.Rg1 Rxg4 27.f4 Qf3 ch followed by 28... Qxd1)

25. ... Kxf6
26. f3 Qxf3
27. Resigns

MURRAY CHANDLER